

Citation Report

 Felix Albu (Author)

Analyze Results

 Create Alert

 Export Full Report

Publications

106

Total

From 1975 ▾ to 2025 ▾

Citing Articles

1,012 [Analyze](#)

Total

941 [Analyze](#)

Without self-citations

Times Cited

1,477

Total


1,266

Without self-citations

13.93

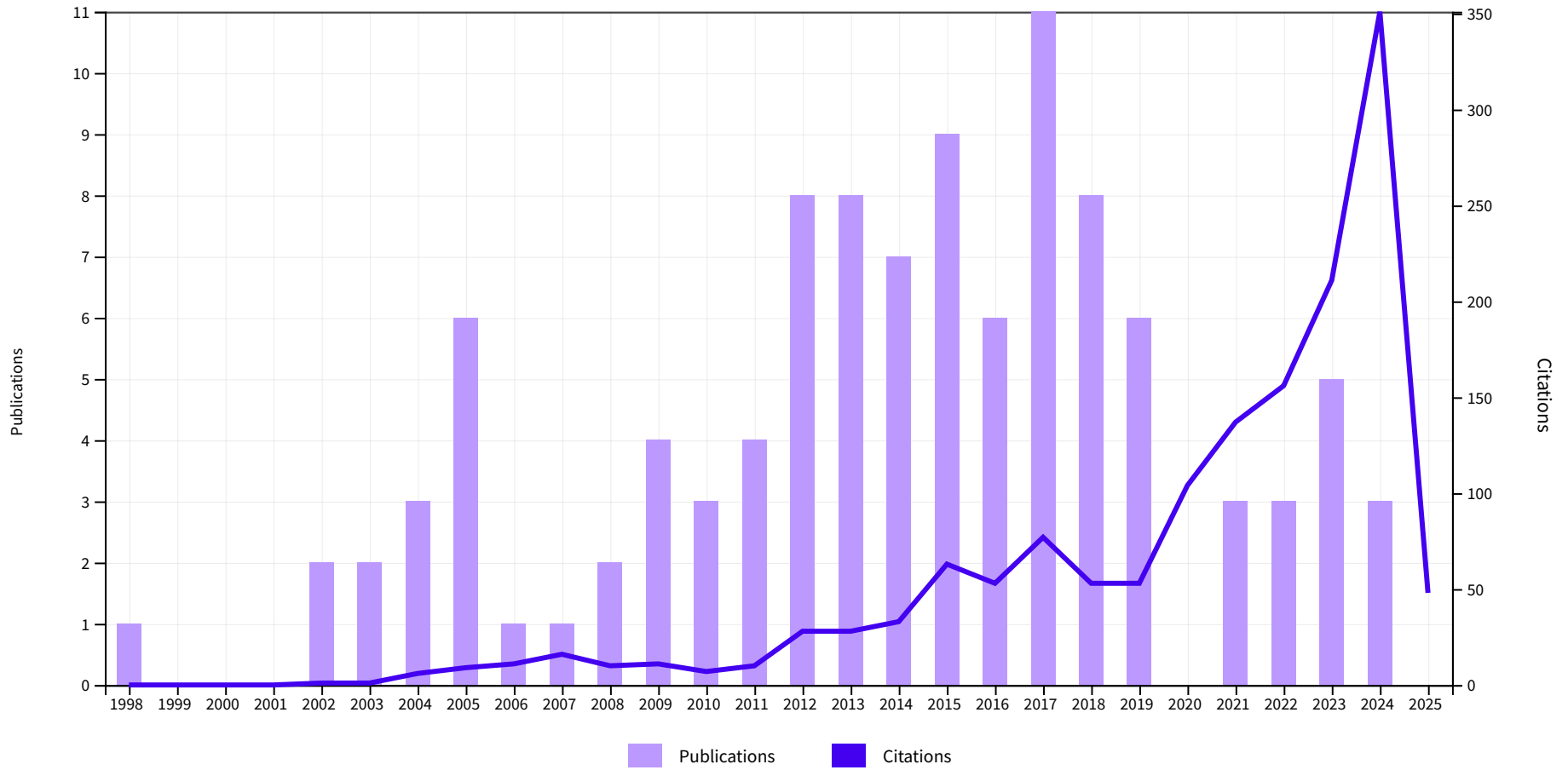
Average per item

25

H-Index 

Times Cited and Publications Over Time

DOWNLOAD



106 Publications

Citations: highest first ▾

< 1 of 3 >

Citations

< Previous year					Next year >		Average per year	Total
2021	2022	2023	2024	2025				
137	156	211	351	48	61.54	19 177		

<p>⊖ 1</p>	<p>A survey on deep learning tools dealing with data scarcity: definitions, challenges, solutions, tips, and applications</p> <p>Alzubaidi, L; Bai, JS; (...); Gu, YT</p> <p>Apr 14 2023 JOURNAL OF BIG DATA ▾ 10 (1)</p>	0	0	50	154	34	79.33	238
<p>⊖ 2</p>	<p>Frequency-Domain Filtered-x LMS Algorithms for Active Noise Control: A Review and New Insights</p> <p>Yang, FR; Cao, Y; (...); Yang, J</p> <p>Nov 2018 APPLIED SCIENCES-BASEL ▾ 8 (11)</p>	12	10	16	15	2	7.88	63
<p>⊖ 3</p>	<p>Coordinate descent iterations in fast affine projection algorithm</p> <p>Zakharov, Y and Albu, E</p> <p>May 2005 IEEE SIGNAL PROCESSING LETTERS ▾ 12 (5) , pp.353-356</p>	5	2	0	4	0	2.48	52
<p>⊖ 4</p>	<p>The Gauss-Seidel fast affine projection algorithm</p> <p>Albu, E; Kadlec, J; (...); Fagan, A</p> <p>IEEE Workshop on Signal Processing Systems (SIPS 02)</p> <p>2002 2002 IEEE WORKSHOP ON SIGNAL PROCESSING SYSTEMS , pp.109-114</p>	1	0	5	0	0	2.08	50

<p>⊖ 5</p>	<p>Pseudo-affine projection algorithm's for multichannel active noise control</p> <p>Albu, F; Bouchard, M and Zakharov, Y</p> <p>Mar 2007 IEEE TRANSACTIONS ON AUDIO SPEECH AND LANGUAGE PROCESSING ▾ 15 (3) , pp.1044-1052</p>	4	4	1	6	0	2.16	41
<p>⊖ 6</p>	<p>A Soft Parameter Function Penalized Normalized Maximum Correntropy Criterion Algorithm for Sparse System Identification</p> <p>Li, YS; Wang, YY; (...); Albu, F</p> <p>Jan 2017 ENTROPY ▾ 19 (1)</p>	3	9	1	2	0	4.44	40
<p>⊖ 7</p>	<p>ONE SCAN SHADOW COMPENSATION AND VISUAL ENHANCEMENT OF COLOR IMAGES</p> <p>Albu, F; Vertan, C; (...); Drimbarean, A</p> <p>16th IEEE International Conference on Image Processing</p> <p>2009 2009 16TH IEEE INTERNATIONAL CONFERENCE ON IMAGE PROCESSING, VOLS 1-6 , pp.3133-3136</p>	7	3	6	7	0	2.12	36
<p>⊖ 8</p>	<p>A Variable Step Size Modified Decorrelated NLMS Algorithm for Adaptive Feedback Cancellation in Hearing Aids</p> <p>Rotaru, M; Albu, F and Coanda, H</p> <p>10th International Symposium on Electronics and Telecommunications (ISETC)</p> <p>2012 2012 10TH INTERNATIONAL SYMPOSIUM ON ELECTRONICS AND TELECOMMUNICATIONS , pp.263-266</p>	2	2	3	1	0	2.43	34
	<p>Steady State Mean Square Analysis of Standard Maximum Versoria Criterion Based Adaptive Algorithm</p>	7	9	6	8	3	6.6	33

⊖ 9

[Radhika, S; Albu, F and Chandrasekar, A](#)
Apr 2021 | IEEE TRANSACTIONS ON CIRCUITS AND SYSTEMS II-EXPRESS BRIEFS ▾ 68 (4), pp.1547-1551

☰ Enriched Cited References

⊖ 10

Memory improved proportionate affine projection sign algorithm

[Albu, F](#) and [Kwan, HK](#)

Sep 27 2012 | ELECTRONICS LETTERS ▾ 48 (20), pp.1268-+

5

3

0

1

0

2.21

31

⊖ 11

A General Zero Attraction Proportionate Normalized Maximum Correntropy Criterion Algorithm for Sparse System Identification

[Li, YS; Wang, YY; \(...\); Jiang, JS](#)

Oct 2017 | SYMMETRY-BASEL ▾ 9 (10)

5

9

7

3

0

3.33

30

⊖ 12

Detection of ventricular fibrillation rhythm by using boosted support vector machine with an optimal variable combination

[Panigrahy, D; Sahu, PK](#) and [Albu, E](#)

May 2021 | COMPUTERS & ELECTRICAL ENGINEERING ▾ 91

2

7

9

8

2

5.6

28

<p>⊖ 13</p>	<p>Sparse Channel Estimation Based on a Reweighted Least-Mean Mixed-Norm Adaptive Filter Algorithm</p> <p>Li, YS; Wang, YY and Albu, F 24th European Signal Processing Conference (EUSIPCO) 2016 2016 24TH EUROPEAN SIGNAL PROCESSING CONFERENCE (EUSIPCO) , pp.2380-2384</p>	2	0	2	1	1	2.8	28
<p>⊖ 14</p>	<p>Robust Sparse Normalized LMAT Algorithms for Adaptive System Identification Under Impulsive Noise Environments</p> <p>Pogula, R; Kumar, TK and Albu, F Nov 2019 CIRCUITS SYSTEMS AND SIGNAL PROCESSING ▾ 38 (11) , pp.5103-5134</p>	5	6	6	8	0	3.86	27
<p>⊖ 15</p>	<p>Group-Constrained Maximum Correntropy Criterion Algorithms for Estimating Sparse Mix-Noised Channels</p> <p>Wang, YY; Li, YS; (...); Yang, R Aug 2017 ENTROPY ▾ 19 (8)</p>	1	7	6	9	0	3	27
<p>⊖ 16</p>	<p>AFFINE PROJECTION ALGORITHMS: EVOLUTION TO SMART AND FAST ALGORITHMS AND APPLICATIONS</p> <p>Gonzalez, A; Ferrer, M; (...); de Diego, M 20th European Signal Processing Conference (EUSIPCO) 2012 2012 PROCEEDINGS OF THE 20TH EUROPEAN SIGNAL PROCESSING CONFERENCE (EUSIPCO) , pp.1965-1969</p>	4	3	1	2	0	1.93	27
		0	4	9	13	0	6.5	26

⊖ 17

Proportionate Maximum Versoria Criterion-Based Adaptive Algorithm for Sparse System Identification

[Radhika, S](#); [Albu, F](#) and [Chandrasekar, A](#)

Mar 2022 | [IEEE TRANSACTIONS ON CIRCUITS AND SYSTEMS II-EXPRESS BRIEFS](#) ▼ 69 (3), pp.1902-1906

☰★ Enriched Cited References

⊖ 18

NEURAL NETWORK APPROACHES FOR CHILDREN'S EMOTION RECOGNITION IN INTELLIGENT LEARNING APPLICATIONS

[Albu, F](#); [Hagiescu, D](#); (...); [Puica, MA](#)

7th International Conference on Education and New Learning Technologies (EDULEARN)

2015

| EDULEARN15: 7TH INTERNATIONAL CONFERENCE ON EDUCATION AND NEW LEARNING TECHNOLOGIES, pp.3229-3239

4 8 4 7 0 2.36 26

⊖ 19

Evolutionary and variable step size strategies for multichannel filtered-x affine projection algorithms

[Gonzalez, A](#); [Albu, F](#); (...); [de Diego, M](#)

Aug 2013 | [IET SIGNAL PROCESSING](#) ▼ 7 (6), pp.471-476

0 0 0 3 0 2 26

⊖ 20

Improved Variable Forgetting Factor Recursive Least Square Algorithm

[Albu, F](#)

12th International Conference on Control, Automation, Robotics and Vision (ICARCV)

2012

| 2012 12TH INTERNATIONAL CONFERENCE ON CONTROL, AUTOMATION, ROBOTICS & VISION (ICARCV), pp.1789-1793

2 4 3 6 0 1.86 26

1 1 1 7 0 1.24 19 26

⊖ 21

The Gauss-Seidel fast affine projection algorithm for multichannel active noise control and sound reproduction systems

[Bouchard, M](#) and [Albu, F](#)
Mar-apr 2005

| INTERNATIONAL JOURNAL OF ADAPTIVE CONTROL AND SIGNAL PROCESSING ▾ 19
(2-3) , pp.107-123

⊖ 22

Fast block exact Gauss-Seidel pseudo affine projection algorithm

[Albu, F](#) and [Kwan, HK](#)

Oct 28 2004 | ELECTRONICS LETTERS ▾ 40 (22) , pp.1451-1453

1 2 2 2 0 1.18 26

⊖ 23

Robust Exponential Hyperbolic Sine Adaptive Filter for Impulsive Noise Environments

[Radhika, S](#); [Albu, F](#) and [Chandrasekar, A](#)

Dec 2022 | IEEE TRANSACTIONS ON CIRCUITS AND SYSTEMS II-EXPRESS BRIEFS ▾ 69
(12) , pp.5149-5153

☰★ Enriched Cited References

0 0 6 16 3 6.25 25

⊖ 24

The Hybrid Simplified Kalman Filter for Adaptive Feedback Cancellation

[Albu, F](#); [Tran, LTT](#) and [Nordholm, S](#)

12th IEEE International Conference on Communications (COMM)
2018 | 2018 12TH INTERNATIONAL CONFERENCE ON COMMUNICATIONS (COMM) , pp.45-50

3 3 7 10 0 3.13 25

1 0 2 3 0 1.09 25

The Gauss-Seidel pseudo affine projection algorithm and its application for echo cancellation

<p>⊖ 25</p>	<p>Albu, F and Fagan, A 37th Asilomar Conference on Signals, Systems and Computers 2003 CONFERENCE RECORD OF THE THIRTY-SEVENTH ASILOMAR CONFERENCE ON SIGNALS, SYSTEMS & COMPUTERS, VOLS 1 AND 2 , pp.1303-1306</p>							
<p>⊖ 26</p>	<p>PROPORTIONATE ALGORITHMS FOR TWO-MICROPHONE ACTIVE FEEDBACK CANCELLATION Albu, F; Nakagawa, R and Nordholm, S 23rd European Signal Processing Conference (EUSIPCO) 2015 2015 23RD EUROPEAN SIGNAL PROCESSING CONFERENCE (EUSIPCO) , pp.290-294</p>	6	1	4	1	0	2.09	23
<p>⊖ 27</p>	<p>Acoustic feedback cancellation in hearing aids using dual adaptive filtering and gain-controlled probe signal Akhtar, MT; Albu, F and Nishihara, A Jul 2019 BIOMEDICAL SIGNAL PROCESSING AND CONTROL 52 , pp.1-13</p>	6	2	4	4	0	3.14	22
<p>⊖ 28</p>	<p>A VARIABLE STEP SIZE EVOLUTIONARY AFFINE PROJECTION ALGORITHM Albu, F; Paleologu, C and Benesty, J IEEE International Conference on Acoustics, Speech, and Signal Processing (ICASSP) 2011 2011 IEEE INTERNATIONAL CONFERENCE ON ACOUSTICS, SPEECH, AND SIGNAL PROCESSING , pp.429-432</p>	2	2	0	1	0	1.47	22
<p>⊖ 29</p>	<p>New Variable Step Size Affine Projection Algorithms Albu, F; Paleologu, C and Ciochina, S 9th International Conference on Communications (COMM)</p>	1	2	2	2	0	1.5	21

⊖	1	1	5	2	0	1.36	19
⊖	1	2	0	1	0	1.19	19
⊖	3	1	2	0	0	0.86	19
⊖	4	4	3	1	0	1.27	14
⊖	2	3	1	1	1	0.58	14
⊖	3	3	2	4	0	1.63	13
⊖	3	4	1	0	0	1.5	12
⊖	0	0	0	1	0	0.57	12
⊖	4	1	0	1	0	1.38	11
⊖	0	0	0	1	0	0.79	19.1

⊖				1	1	3	4	0	1.8	9
⊖				3	2	0	1	0	1.29	9



© 2025 Clarivate
 Training Portal
 Product Support

Data Correction
 Privacy Statement
 Newsletter

Copyright Notice
 Cookie Policy
 Terms of Use

[Setări cookie-uri](#)

Follow Us

